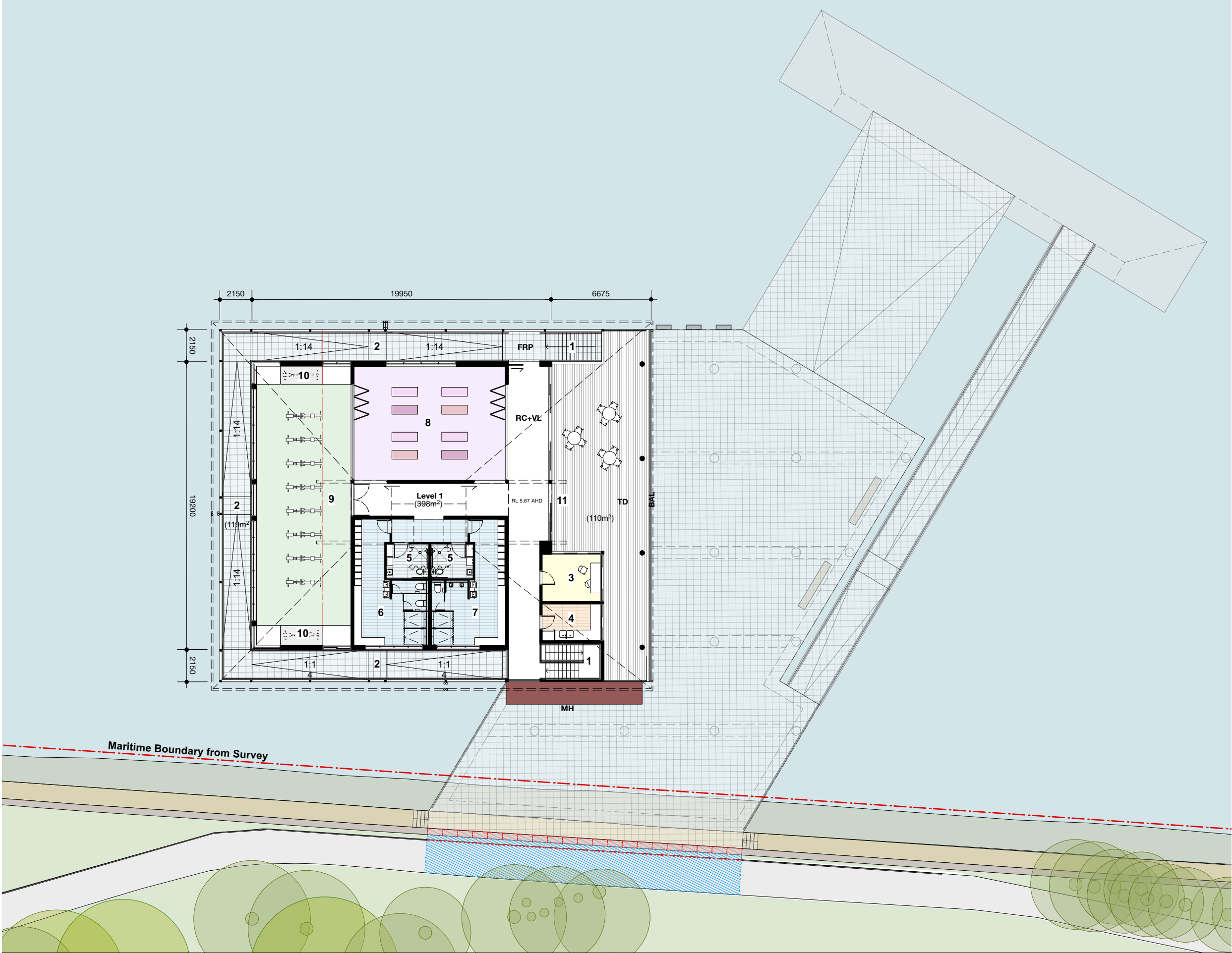


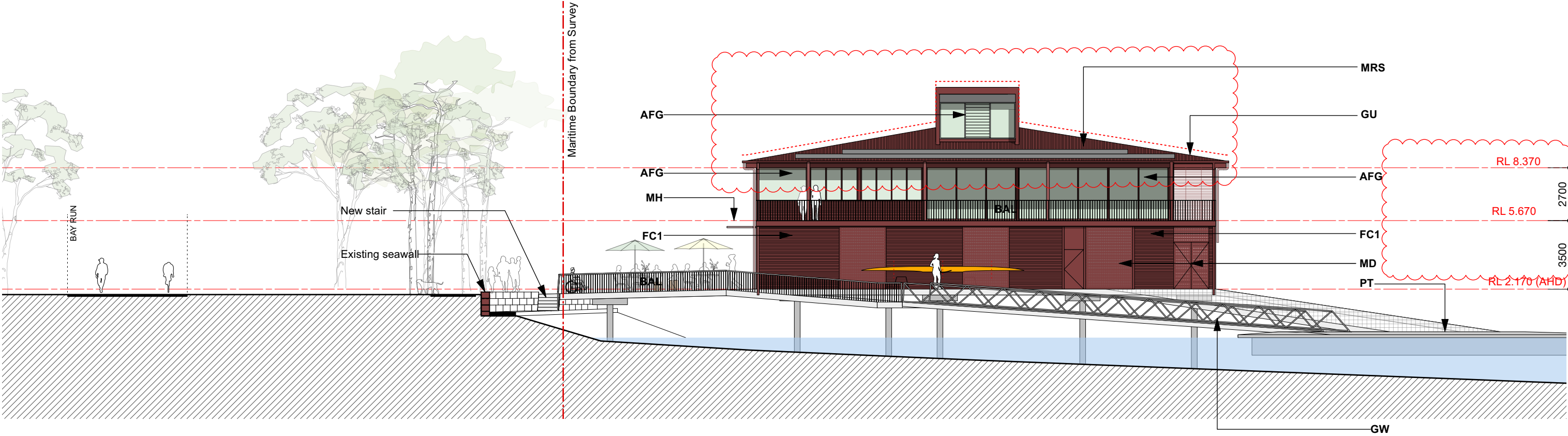
- Plan Legend**
- 1 Entry foyer
 - 2 Undercover entry/exit ramp
 - 3 Waste storage
 - 4 Exit stairs
 - 5 Oar storage
 - 6 Kiosk (12.3m2)
 - 7 All gender accessible change room
 - 8 Storage cupboard
 - 9 Work bench
 - 10 Wash down area
 - 11 Rain water re use tank

<div>ARCHITECTS:</div> <div>hill thalis</div> <div><small>A+ARCHITECTURE + URBAN PROJECTS PTY LTD LEVEL 5, 68-72 Wentworth Ave Sydney NSW 2010 Australia T 02 9211 6274 F 02 9281 3171 E admin@hillthalis.com.au www.hillthalis.com.au Nominated Architects: Philip Thalal #6780 Sarah Hill #5285</small></div> <div><div><div>© Copyright in all documents and drawings prepared by Hill Thalal and in any work executed from those documents and drawings shall remain the property of Hill Thalal or on creation vest in Hill Thalal</div><div><div>Use figured dimensions only</div><div>Do not scale</div><div>Comply with the Building Code of Australia</div><div>Comply with the relevant Australian Standards</div><div>Comply with relevant Authority requirements</div></div></div></div>	<div><div><div><div><div><div>1</div><div>2</div><div>3</div><div>4</div><div>5</div><div>6</div><div>7</div><div>8</div><div>9</div><div>10</div><div>11</div></div></div><div><div>North</div><div>12</div><div>13</div><div>14</div><div>15</div><div>16</div><div>17</div><div>18</div><div>19</div><div>20</div><div>21</div><div>22</div><div>23</div><div>24</div><div>25</div><div>26</div><div>27</div><div>28</div><div>29</div><div>30</div><div>31</div><div>32</div><div>33</div><div>34</div><div>35</div><div>36</div><div>37</div><div>38</div><div>39</div><div>40</div><div>41</div><div>42</div><div>43</div><div>44</div><div>45</div><div>46</div><div>47</div><div>48</div><div>49</div><div>50</div><div>51</div><div>52</div><div>53</div><div>54</div><div>55</div><div>56</div><div>57</div><div>58</div><div>59</div><div>60</div><div>61</div><div>62</div><div>63</div><div>64</div><div>65</div><div>66</div><div>67</div><div>68</div><div>69</div><div>70</div><div>71</div><div>72</div><div>73</div><div>74</div><div>75</div><div>76</div><div>77</div><div>78</div><div>79</div><div>80</div><div>81</div><div>82</div><div>83</div><div>84</div><div>85</div><div>86</div><div>87</div><div>88</div><div>89</div><div>90</div><div>91</div><div>92</div><div>93</div><div>94</div><div>95</div><div>96</div><div>97</div><div>98</div><div>99</div><div>100</div></div></div></div></div>	<div>REV</div> <div>P2</div> <div>P3</div> <div>P4</div> <div>A</div> <div>B</div> <div>C</div> <div>D</div> <div>E</div>	<div>DATE</div> <div>14/8/23</div> <div>12/9/23</div> <div>15/9/23</div> <div>25/9/23</div> <div>26/10/23</div> <div>31/7/24</div> <div>25/9/24</div> <div>17/12/24</div>	<div>AMENDMENT</div> <div>PRELIMINARY ISSUE</div> <div>ISSUE TO QS</div> <div>PRELIMINARY ISSUE</div> <div>ISSUE FOR DEVELOPMENT APPLICATION</div> <div>ISSUE FOR DEVELOPMENT APPLICATION</div> <div>Revise notations</div> <div>Kiosk Area</div> <div>Revise path and retain sandstone wall</div>	<div>AFD - Aluminium Framed Glazed Door</div> <div>AFG - Aluminium Framed Glazing</div> <div>BAL - Metal Balustrade for compliance with NCC/BCA + AS 1428.1</div> <div>D - Deck, Concrete/Reinforced Fibreglass Floor Grate</div> <div>DP - Downpipe</div> <div>FC1 - Facade - Metal Cladding</div> <div>FC2 - Facade - Coloured Panel Cladding</div> <div>FRP - Reinforced Fibreglass Floor Grate</div> <div>GU - Gutter</div> <div>GW - Gangway to Marine Engineer's Detail</div> <div>HR - Metal handrail for compliance with NCC/BCA + AS 1428.1</div> <div>MD - Perforated Metal Door</div> <div>MH - Metal Hood</div> <div>MRS - Metal Roof Sheeting</div> <div>PT - Pontoon to Marine Engineers Detail</div> <div>PV - Photovoltaic panels</div> <div>RC - Reinforced Concrete Floor</div> <div>RMT - Ramp</div> <div>RWT - Rain Water Tank</div> <div>SCR - Steel Framed Metal Screening</div> <div>SK - Skylight</div> <div>ST - Painted steel</div> <div>TD - Timber Deck</div> <div>VL - Vinyl Flooring Finish</div>	<div>PROJECT</div> <div>Leichhardt Park Community Boat Shed</div> <div>Leichhardt Park, Lilyfield, NSW</div>	<div>CLIENT</div> <div>Community Rowing Club</div>	<div>DRAWING TITLE</div> <div>Ground Floor Plan</div>	<div>JOB NO</div> <div>21.66</div>	<div>DRAWN</div> <div>VK</div>	<div>SCALE</div> <div>1:250</div>	<div>DRAWING NO.</div> <div>DA 2.10</div>	<div>DATE</div> <div>17/8/22</div>	<div>CHECKED</div> <div>PT</div>	<div>PLOT DATE</div> <div>17/12/24</div>	<div>REVISION</div> <div>E</div>
--	--	---	---	--	---	---	--	--	------------------------------------	--------------------------------	-----------------------------------	--	------------------------------------	----------------------------------	--	---

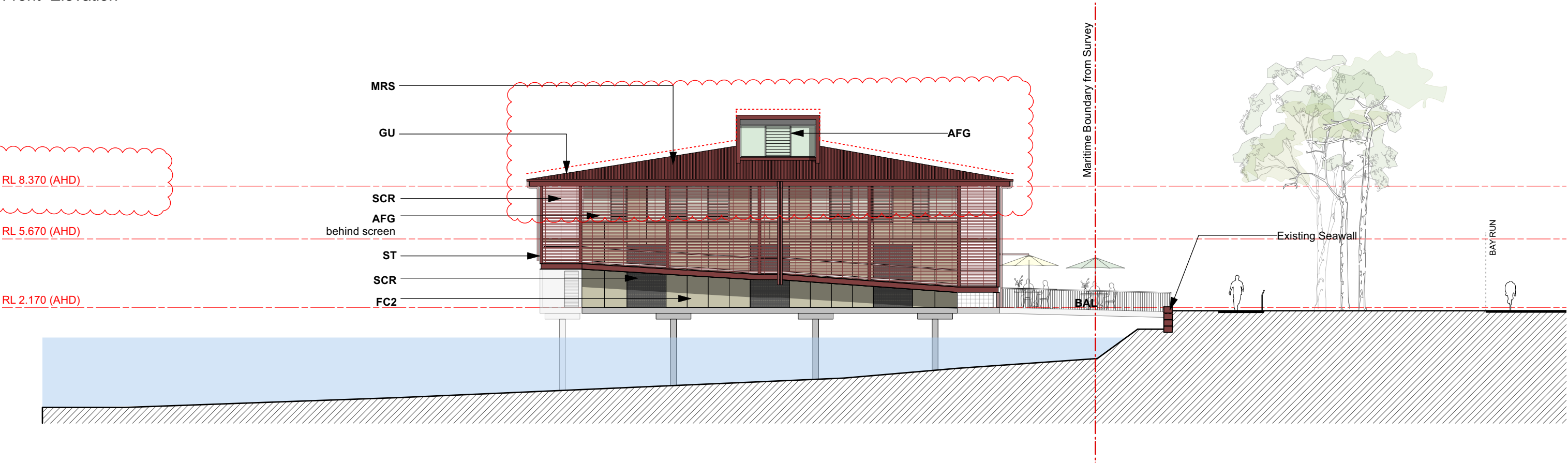


- Plan Legend**
- 1 Exit Stairs
 - 2 Undercover entry/exit ramp
 - 3 Coaches room (12.4m²)
 - 4 Kitchenette /Storage (9.6m²)
 - 5 All gender accessible change room (13m²)
 - 6 Female changroom (34.8m²)
 - 7 Male change room (34.8m²)
 - 8 Multipurpose community room (76.8m²)
 - 9 Indoor rowing room (117.6m²)
 - 10 Storage Cupboards (half height)
 - 11 Deck

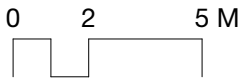
<div>ARCHITECTS:</div> <div>hill thalis</div> <div>ARCHITECTURE + URBAN PROJECTS PTY LTD</div> <div>LEVEL 5, 68-72 Wentworth Ave</div> <div>Sydney Hills NSW 2010 Australia</div> <div>T 02 9211 6274 F 02 9281 3171</div> <div>E admin@hillthalis.com.au www.hillthalis.com.au</div> <div>Nominated Architects: Philip Thalal #6780 Sarah Hill #5285</div> <div>© Copyright in all documents and drawings prepared by Hill Thalal and in any work executed from those documents and drawings shall remain the property of Hill Thalal or on creation vest in Hill Thalal</div>		REV	DATE	AMENDMENT	<div>AFD - Aluminium Framed Glazed Door</div> <div>AFG - Aluminium Framed Glazing</div> <div>BAL - Metal Balustrade for compliance with NCC/BCA + AS 1428.1</div> <div>D - Deck, Concrete/Reinforced Fibreglass Floor Grate</div> <div>DP - Downpipe</div> <div>FC1 - Facade - Metal Cladding</div> <div>FC2 - Facade - Coloured Panel Cladding</div> <div>FRP - Reinforced Fibreglass Floor Grate</div> <div>GU - Gutter</div> <div>GW - Gangway to Marine Engineer's Detail</div> <div>HR - Metal handrail for compliance with NCC/BCA + AS 1428.1</div> <div>MD - Perforated Metal Door</div> <div>MH - Metal Hood</div> <div>MRS - Metal Roof Sheeting</div> <div>PT - Pontoon to Marine Engineers Detail</div> <div>PV - Photovoltaic panels</div> <div>RC - Reinforced Concrete Floor</div> <div>RMP - Ramp</div> <div>RWT - Rain Water Tank</div> <div>SCR - Steel Framed Metal Screening</div> <div>SK - Skylight</div> <div>ST - Painted steel</div> <div>TD - Timber Deck</div> <div>VL - Vinyl Flooring Finish</div>	PROJECT		DRAWING TITLE		
		P1		10/8/23		PRELIMINARY ISSUE	Leichhardt Park Community Boat Shed		First Floor Plan	
		P2		14/8/23		PRELIMINARY ISSUE	Leichhardt Park, Lilyfield, NSW		JOB NO	DRAWN
		P3		12/9/23		ISSUE TO QS	CLIENT		21.66	VK
		A		25/9/23		PRELIMINARY ISSUE	Community Rowing Club		SCALE	1:250
		B		26/10/23		ISSUE FOR DEVELOPMENT APPLICATION			DRAWING NO.	DA 2.11
		C		25/9/24		ISSUE FOR DEVELOPMENT APPLICATION			DATE	CHECKED
						Areas			PLOT DATE	26/9/24
									REVISION	
										C



Front Elevation

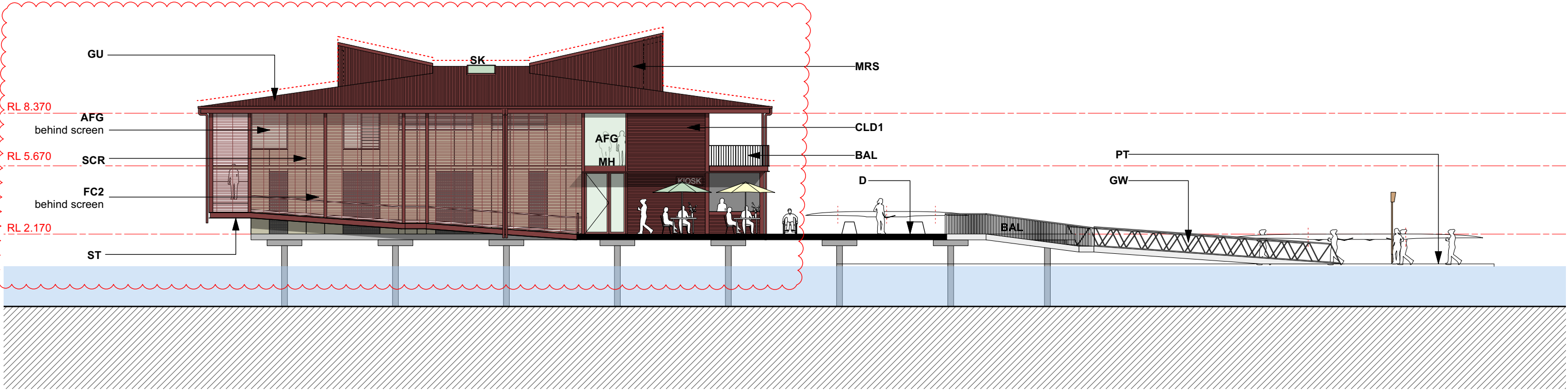


Rear Elevation

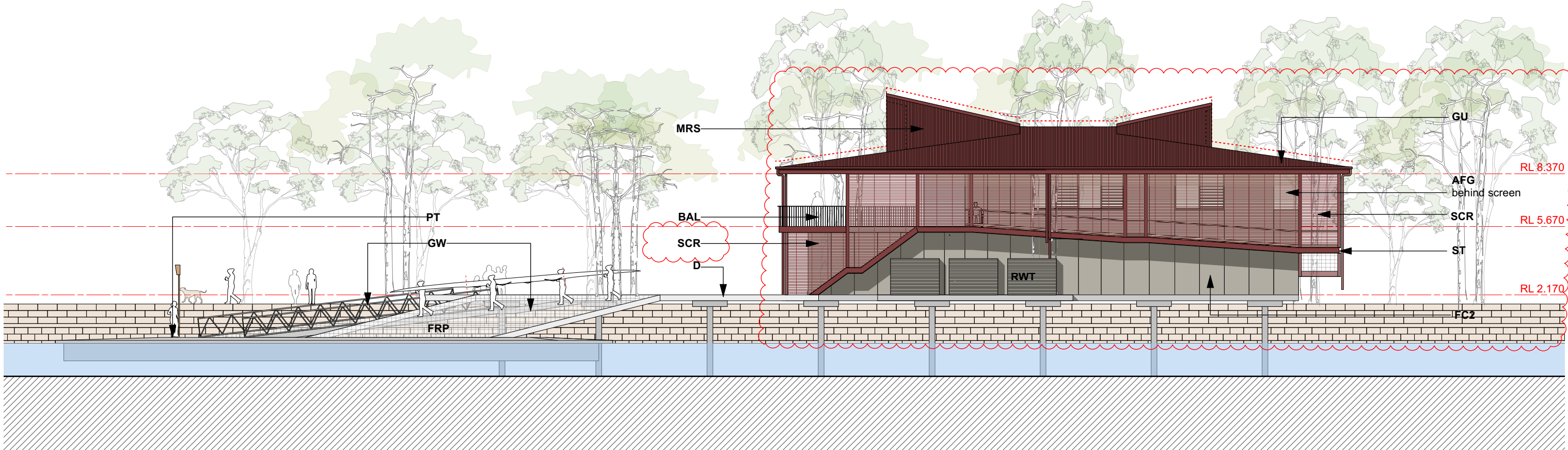


Issue for Development Application

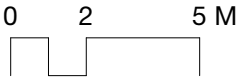
<div>ARCHITECTS:</div> <div>hill thalis</div> <div>ARCHITECTURE + URBAN PROJECTS PTY LTD</div> <div>LEVEL 4, 15 Foster Street</div> <div>Sydney Hills NSW 2010 Australia</div> <div>T 02 9211 4274 F 02 9281 3171</div> <div>E admin@hillthalis.com.au www.hillthalis.com.au</div> <div>Nominated Architects: Philip Thalal #6780 Sarah Hill #5285</div> <div>© Copyright in all documents and drawings prepared by Hill Thalal and in any work executed from those documents and drawings shall remain the property of Hill Thalal or on creation vest in Hill Thalal</div>		<table><tr><th>REV</th><th>DATE</th><th>AMENDMENT</th></tr><tr><td>P1</td><td>9/8/23</td><td>PRELIMINARY ISSUE</td></tr><tr><td>A</td><td>25/9/23</td><td>ISSUE FOR DEVELOPMENT APPLICATION</td></tr><tr><td>B</td><td>31/7/24</td><td>Maritime Boundary</td></tr><tr><td>C</td><td>17/12/24</td><td>Revise height and sandstone and colours</td></tr></table>	REV	DATE	AMENDMENT	P1	9/8/23	PRELIMINARY ISSUE	A	25/9/23	ISSUE FOR DEVELOPMENT APPLICATION	B	31/7/24	Maritime Boundary	C	17/12/24	Revise height and sandstone and colours	<div>AFD - Aluminium Framed Glazed Door</div> <div>AFG - Aluminium Framed Glazing</div> <div>BAL - Metal Balustrade for compliance with NCC/BCA + AS 1428.1</div> <div>D - Deck: Concrete/Reinforced Fibreglass Floor Grate</div> <div>DP - Downpipe</div> <div>FC1 - Facade - Metal Cladding</div> <div>FC2 - Facade - Coloured Panel Cladding</div> <div>FEP - Reinforced Fibreglass Floor Grate</div> <div>GU - Gutter</div> <div>GW - Gangway to Marine Engineer's Detail</div> <div>HR - Metal handrail for compliance with NCC/BCA + AS 1428.1</div> <div>MD - Perforated Metal Door</div> <div>MH - Metal Hood</div> <div>MRS - Metal Roof Sheeting</div> <div>PT - Pontoon to Marine Engineers Detail</div> <div>PV - Photovoltaic panels</div> <div>RC - Reinforced Concrete Floor</div> <div>RMP - Ramp</div> <div>RWT - Rain Water Tank</div> <div>SCR - Steel Framed Metal Screening</div> <div>SK - Skylight</div> <div>ST - Painted steel</div> <div>TD - Timber Deck</div> <div>VL - Vinyl Flooring Finish</div>	<div>PROJECT</div> <div>Leichhardt Park Community Boat Shed</div> <div>Leichhardt Park, Lilyfield, NSW</div> <div>CLIENT</div> <div>Community Rowing Club</div>	<div>DRAWING TITLE</div> <div>Front + Rear Elevation</div> <table><tr><td>JOB NO</td><td>DRAWN</td><td>SCALE</td><td>DRAWING NO.</td></tr><tr><td>21.66</td><td>BS</td><td>1:200 @ A3</td><td>DA 2.20</td></tr><tr><td>DATE</td><td>CHECKED</td><td>PLOT DATE</td><td>REVISION</td></tr><tr><td>24/8/22</td><td>PT</td><td>18/12/24</td><td>C</td></tr></table>	JOB NO	DRAWN	SCALE	DRAWING NO.	21.66	BS	1:200 @ A3	DA 2.20	DATE	CHECKED	PLOT DATE	REVISION	24/8/22	PT	18/12/24	C
	REV	DATE	AMENDMENT																																	
	P1	9/8/23	PRELIMINARY ISSUE																																	
	A	25/9/23	ISSUE FOR DEVELOPMENT APPLICATION																																	
	B	31/7/24	Maritime Boundary																																	
C	17/12/24	Revise height and sandstone and colours																																		
JOB NO	DRAWN	SCALE	DRAWING NO.																																	
21.66	BS	1:200 @ A3	DA 2.20																																	
DATE	CHECKED	PLOT DATE	REVISION																																	
24/8/22	PT	18/12/24	C																																	



Park Side Elevation

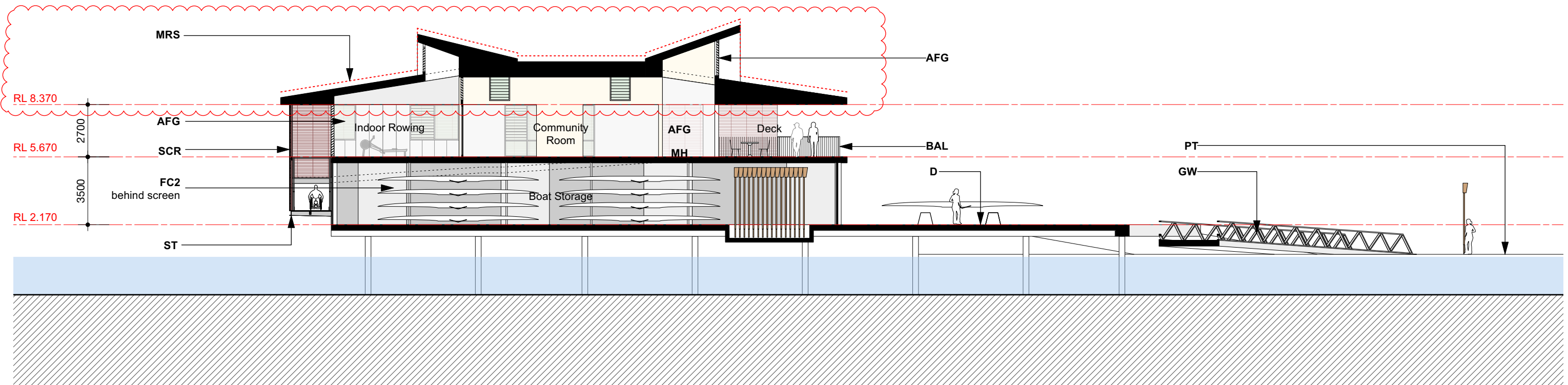


Iron Cove Side Elevation

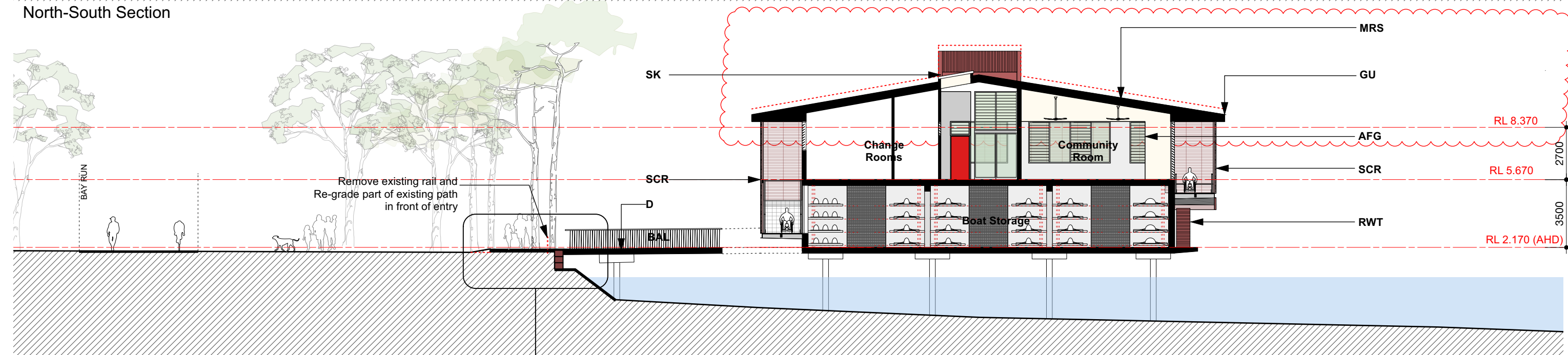


Issue for Development Application

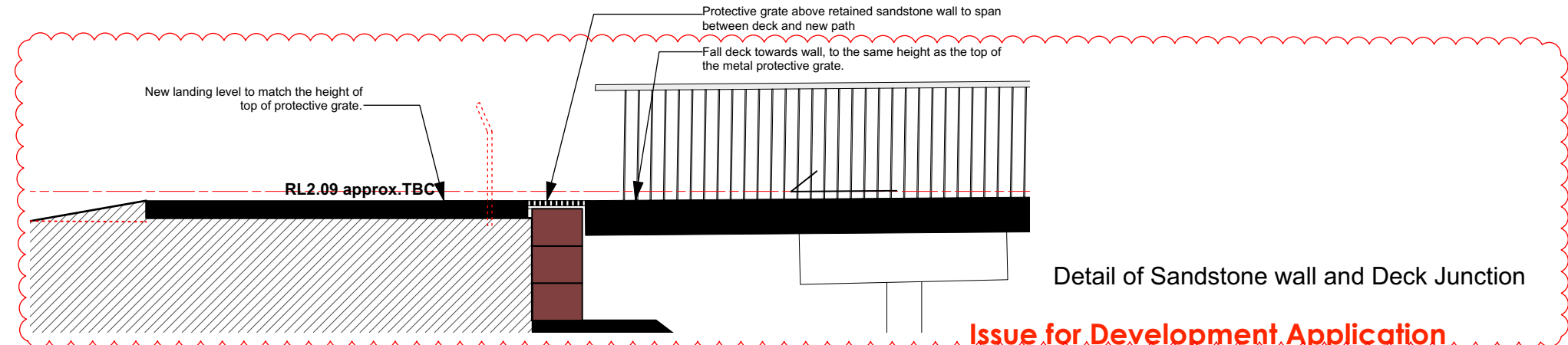
ARCHITECTS: hill thalis ARCHITECTURE + URBAN PROJECTS PTY LTD LEVEL 4, 15 Foster Street Sunny Hill NSW 2010 Australia T 02 9211 4274 F 02 9281 3171 E admin@hillthalis.com.au www.hillthalis.com.au Nominated Architects: Philip Thalys #6780 Sarah Hill #5285	<div><div></div><div></div><div></div></div> <div><div></div><div></div><div></div></div>	REV P1 A B	DATE 9/8/23 25/9/23 17/12/24	AMENDMENT PRELIMINARY ISSUE ISSUE FOR DEVELOPMENT APPLICATION Revise height and colours	AFG - Aluminium Framed Glazed Door AFG - Aluminium Framed Glazing BAL - Metal Balustrade for compliance with NCC/BCA + AS 1428.1 D - Deck, Concrete/Reinforced Fibreglass Floor Grate DP - Downpipe FC1 - Facade - Metal Cladding FC2 - Facade - Coloured Panel Cladding FRP - Reinforced Fibreglass Floor Grate GU - Gutter GW - Gangway to Marine Engineer's Detail HR - Metal handrail for compliance with NCC/BCA + AS 1428.1 MD - Perforated Metal Door MH - Metal Hood MRS - Metal Roof Sheeting PT - Pontoon to Marine Engineers Detail PV - Photovoltaic panels RC - Reinforced Concrete Floor RMP - Ramp RWT - Rain Water Tank SCR - Steel Framed Metal Screening SK - Skylight ST - Painted steel TD - Timber Deck VL - Vinyl Flooring Finish	PROJECT Leichhardt Park Community Boat Shed Leichhardt Park, Lilyfield, NSW CLIENT Community Rowing Club	DRAWING TITLE Side Elevations			
							JOB NO 21.66	DRAWN BS	SCALE 1:200 @ A3	DRAWING NO. DA 2.21
							DATE 24/8/2	CHECKED PT	PLOT DATE 18/12/24	REVISION B



North-South Section



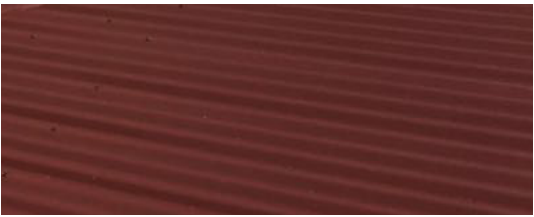
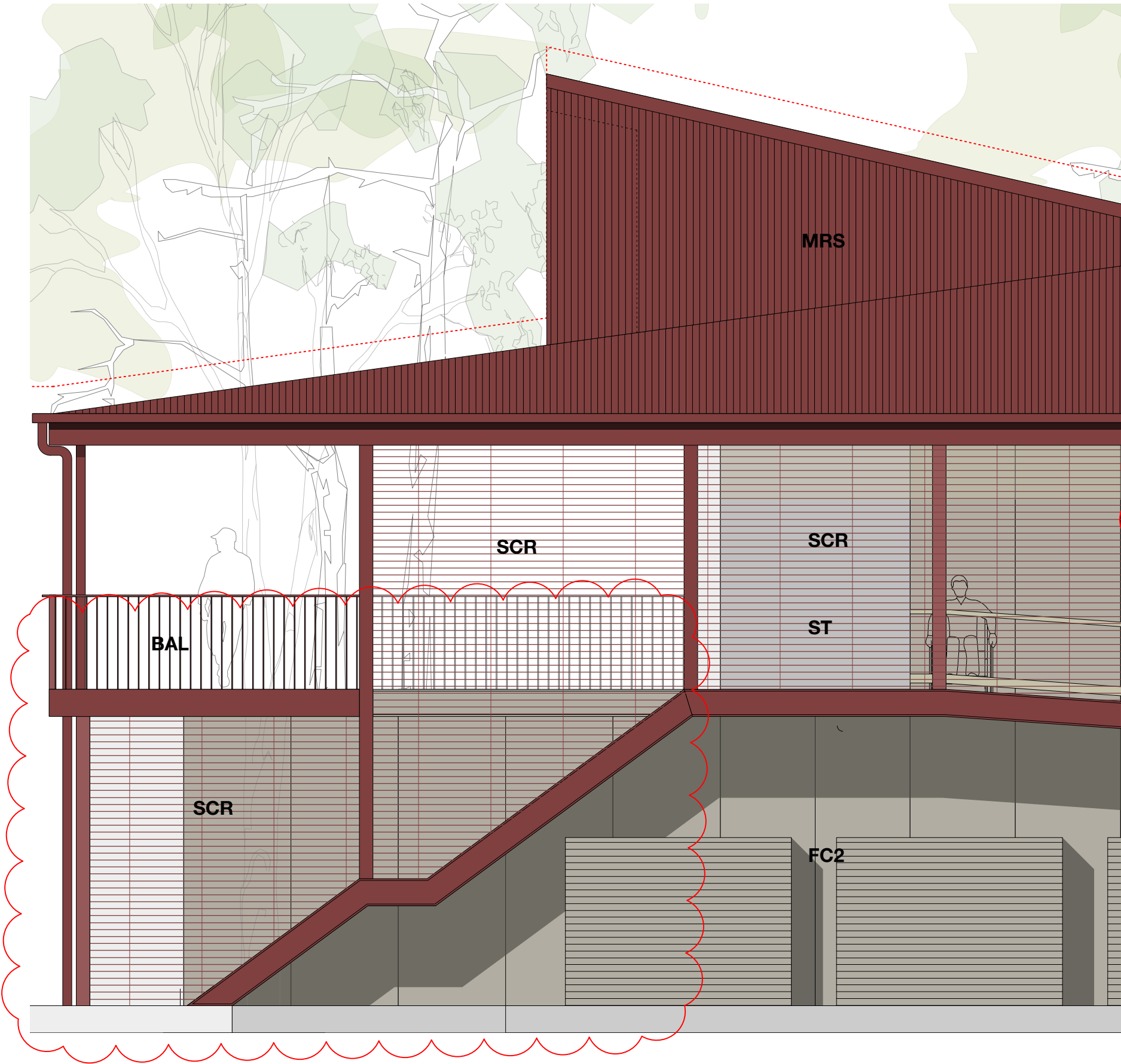
East-West Section



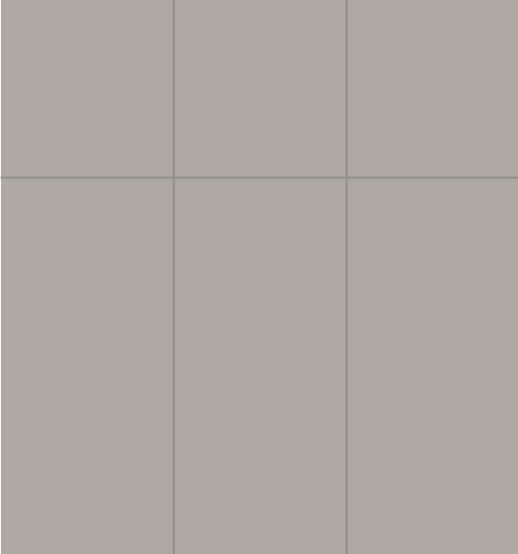
Detail of Sandstone wall and Deck Junction

Issue for Development Application

<div>ARCHITECTS:</div> <div><div>hill thalis</div><div>ARCHITECTURE + URBAN PROJECTS PTY LTD</div><div>LEVEL 4, 15 Foster Street</div><div>Sunny Hill NSW 2010 Australia</div><div>T 02 9211 4274 F 02 9281 3171</div><div>E admin@hillthalis.com.au www.hillthalis.com.au</div><div>Nominated Architects: Philip Thalys #6780 Sarah Hill #5285</div></div> <div>© Copyright in all documents and drawings prepared by Hill Thalys and in any work executed from those documents and drawings shall remain the property of Hill Thalys or on creation vest in Hill Thalys</div>	<div>– Use figured dimensions only</div> <div>– Do not scale</div> <div>– Comply with the Building Code of Australia</div> <div>– Comply with the relevant Australian Standards</div> <div>– Comply with relevant Authorities' requirements</div>	REV	DATE	AMENDMENT	AFD - Aluminium Framed Glazed Door	MH - Metal Hood	PROJECT Leichhardt Park Community Boat Shed Leichhardt Park, Lilyfield, NSW	DRAWING TITLE Sections				
		P1	9/8/23	PRELIMINARY ISSUE	AFG - Aluminium Framed Glazing	MRS - Metal Roof Sheeting		CLIENT Community Rowing Club	JOB NO	DRAWN	SCALE	DRAWING NO.
		A	25/9/23	ISSUE FOR DEVELOPMENT APPLICATION	BAL - Metal Balustrade for compliance with NCC/BCA + AS 1428.1	PT - Pontoon to Marine Engineers Detail			21.66	BS	1:200 @ A3	DA 2.30
		B	17/12/24	Revise height and sandstone wall detail	D - Deck, Concrete/Reinforced Fibreglass Floor Grate	PV - Photovoltaic panels			DATE	CHECKED	PLOT DATE	REVISION
					DP - Downpipe	RC - Reinforced Concrete Floor			24/8/22	PT	18/12/24	B
				FC1 - Facade - Metal Cladding	RMP - Ramp							
				FC2 - Facade - Coloured Panel Cladding	RWT - Rain Water Tank							
				FEP - Reinforced Fibreglass Floor Grate	SCR - Steel Framed Metal Screening							
				GU - Gutter	SK - Skylight							
				GW - Gangway to Marine Engineer's Detail	ST - Painted steel							
				HR - Metal handrail for compliance with NCC/BCA + AS 1428.1	TD - Timber Deck							
				MD - Perforated Metal Door	VL - Vinyl Flooring Finish							



MRS - Metal roof to Colorbond Manor Red



FC2 - Coloured panel similar to Colorbond Dune



SCR - Metal screen similar to Manor Red



ST - Painted steel similar to Manor Red



SCR - Metal screen similar to Manor Red

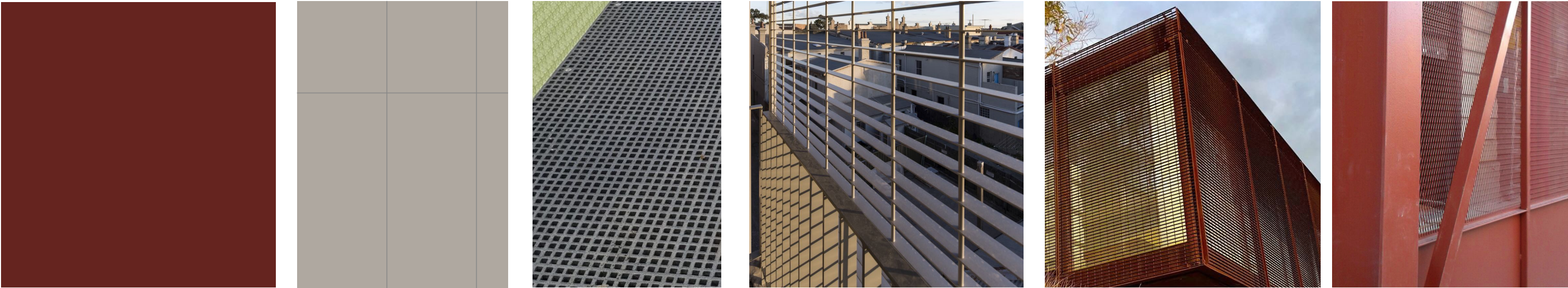
Issue for Development Application

<div>ARCHITECTS:</div> <div>hill thalis</div> <div>ARCHITECTURE + URBAN PROJECTS PTY LTD</div> <div>LEVEL 4, 15 Foster Street Sunny Hills NSW 2010 Australia T 02 9211 4274 F 02 9281 3171 E admin@hillthalis.com.au www.hillthalis.com.au Nominated Architects: Philip Thalys #6780 Sarah Hill #5285</div> <div>© Copyright in all documents and drawings prepared by Hill Thalys and in any work executed from those documents and drawings shall remain the property of Hill Thalys or on creation vest in Hill Thalys</div>	<div>REV</div> <div>P1</div> <div>B</div> <div>DATE</div> <div>15/9/23</div> <div>25/9/23</div> <div>AMENDMENT</div> <div>PRELIMINARY ISSUE</div> <div>Revise colour specifications</div>	<div>AFD - Aluminium Framed Glazed Door</div> <div>AFG - Aluminium Framed Glazing</div> <div>BAL - Metal Balustrade for compliance with NCC/BCA + AS 1428.1</div> <div>D - Deck: Concrete/Reinforced Fibreglass Floor Grate</div> <div>DP - Downpipe</div> <div>FC1 - Facade - Metal Cladding</div> <div>FC2 - Facade - Coloured Panel Cladding</div> <div>FEP - Reinforced Fibreglass Floor Grate</div> <div>GU - Gutter</div> <div>GW - Gangway to Marine Engineer's Detail</div> <div>HR - Metal handrail for compliance with NCC/BCA + AS 1428.1</div> <div>MD - Perforated Metal Door</div> <div>MH - Metal Hood</div> <div>MRS - Metal Roof Sheeting</div> <div>PT - Paratone to Marine Engineers Detail</div> <div>PV - Photovoltaic panels</div> <div>RC - Reinforced Concrete Floor</div> <div>RMP - Ramp</div> <div>RWT - Rain Water Tank</div> <div>SCR - Steel Framed Metal Screening</div> <div>SK - Skylight</div> <div>ST - Painted steel</div> <div>TD - Timber Deck</div> <div>VL - Vinyl Flooring Finish</div>	<div>PROJECT</div> <div>Leichhardt Park Community Boat Shed</div> <div>Leichhardt Park, Lilyfield, NSW</div>	<div>DRAWING TITLE</div> <div>Materials</div>			
			<div>JOB NO</div> <div>21.66</div> <div>DRAWN</div> <div>BS</div> <div>SCALE</div> <div>1:50 @ A3</div> <div>DRAWING NO.</div> <div>DA 3.10</div>				
			<div>DATE</div> <div>24/8/2</div> <div>CHECKED</div> <div>PT</div> <div>PLOT DATE</div> <div>18/12/24</div> <div>REVISION</div> <div>B</div>				
		<div>CLIENT</div> <div>Community Rowing Club</div>					

Colour and Texture Study - Leichhardt Park and Iron Cove



Proposed Material Palette



FC1/MRS - Profiled metal cladding in a Manor Red

FC2 - Coloured panel similar to Colorbond Dune

FRP - Fibreglass Reinforced Plastic panels in grey or translucent colour.

SCR - Metal screen similar to Manor Red

ST - Painted steel similar to Manor Red

Issue for Development Application

<div>ARCHITECTS:</div> <div>hill thalis</div> <div>ARCHITECTURE + URBAN PROJECTS PTY LTD</div> <div>LEVEL 4, 15 Foster Street</div> <div>Sunny Hill, NSW, 2010, Australia</div> <div>T 02 9211 4274, F 02 9281 3171</div> <div>E admin@hillthalis.com.au, www.hillthalis.com.au</div> <div>Nominated Architects: Philip Thalís #6780 Sarah Hill #5285</div> <div>© Copyright in all documents and drawings prepared by Hill Thalís and in any work executed from those documents and drawings shall remain the property of Hill Thalís or on creation vest in Hill Thalís</div>	<div>– Use figured dimensions only</div> <div>– Do not scale</div> <div>– Comply with the Building Code of Australia</div> <div>– Comply with the relevant Australian Standards</div> <div>– Comply with relevant Authorities requirements</div>	REV	DATE	AMENDMENT	<div>AFD - Aluminium Framed Glazed Door</div> <div>AFG - Aluminium Framed Glazing</div> <div>BAL - Metal Balustrade for compliance with NCC/BCA + AS 1428.1</div> <div>D - Deck, Concrete/Reinforced Fibreglass Floor Grate</div> <div>DP - Downpipe</div> <div>FC1 - Facade - Metal Cladding</div> <div>FC2 - Facade - Coloured Panel Cladding</div> <div>FRP - Reinforced Fibreglass Floor Grate</div> <div>GU - Gutter</div> <div>GW - Gangway to Marine Engineer's Detail</div> <div>HR - Metal handrail for compliance with NCC/BCA + AS 1428.1</div> <div>MD - Perforated Metal Door</div> <div>MH - Metal Hood</div> <div>MRS - Metal Roof Sheeting</div> <div>PT - Pontoon to Marine Engineers Detail</div> <div>PV - Photovoltaic panels</div> <div>RC - Reinforced Concrete Floor</div> <div>RMP - Ramp</div> <div>RWT - Rain Water Tank</div> <div>SCR - Steel Framed Metal Screening</div> <div>SK - Skylight</div> <div>ST - Painted steel</div> <div>TD - Timber Deck</div> <div>VL - Vinyl Flooring Finish</div>	PROJECT		DRAWING TITLE				
		A	25/9/23	ISSUE FOR DEVELOPMENT APPLICATION		Leichhardt Park Community Boat Shed		Materials - Contextual Study				
		B	17/12/24	Revise colour specification		Leichhardt Park, Lilyfied, NSW		JOB NO	DRAWN	SCALE	DRAWING NO.	
						21.66		BS	DA 3.11			
						CLIENT		DATE	CHECKED	PLOT DATE	REVISION	
						Community Rowing Club		24/8/2	PT	18/12/24	B	